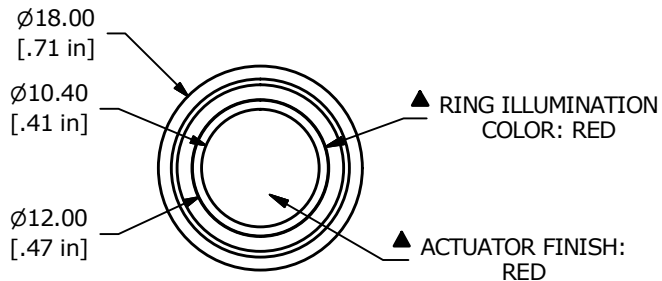
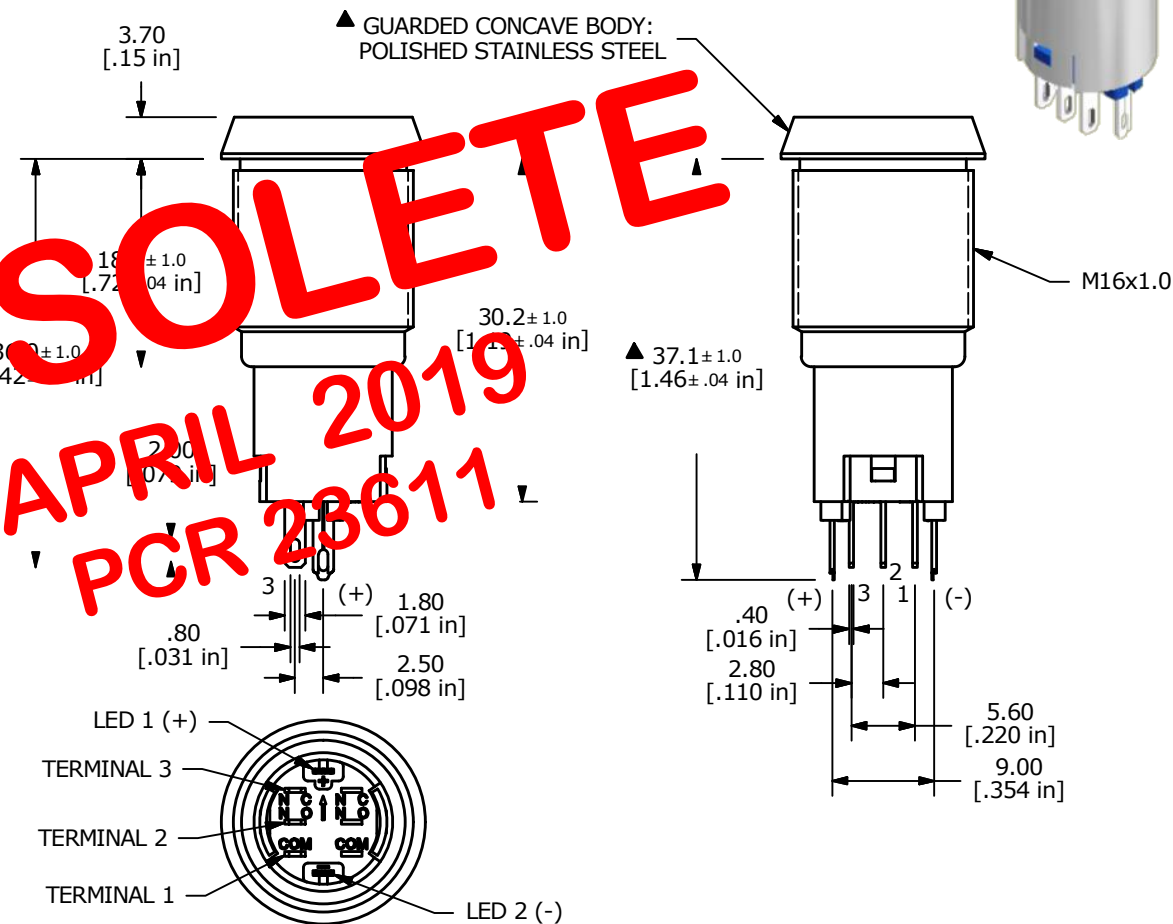
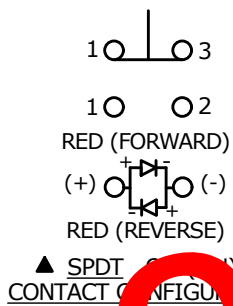


PANEL CUTOUT
MAX. PANEL THICKNESS
14.0mm [.55]



SWITCH FUNCTION	
POS. 1	POS. 2
ON	(ON)
1-3	1-2

(ON) = MOMENTARY



OBSOLETE
APRIL 2019
PCR 23611

- NOTE:
1. ALL DIMENSIONS IN MM [INCH]
 2. GENERAL TOLERANCE: X.X = ±0.4
X.XX = ±0.25
 3. TERMINAL NUMBERS FOR REF ONLY
 4. CONTACT MATERIAL: GOLD PLATED
 5. RATING: 2A 48VDC
 6. ELECTRIC LIFE: 50,000 MAKE-AND-BREAK CYCLES AT FULL LOAD.
 7. INSULATION RESISTANCE: 1,000 MΩ MIN.
 8. DIELECTRIC STRENGTH: 2,000 VAC MIN. FOR 1 MINUTE
 9. CONTACT RESISTANCE: 50mΩ MAX. @ 1A 12VDC
 10. OPERATING TEMP.: -20°C to 55°C
 11. ▲ DENOTES CRITICAL PARAMETER.
 12. HARDWARE SUPPLIED: O-RING AND HEXNUT
 13. INGRESS RATING: IP40
 14. 2011/65/EU (ROHS) COMPLIANT
 15. LAMP VOLTAGE: 24V

REV	PCR NO	DESCRIPTION	DATE	BY
C	23358	UPDATED RATING TO 2A 48VDC	5/11/18	MJR
B	22881	UPDATED RATING TO 1A 24VDC	6/7/17	MJR

E-SWITCH®

TITLE PV3G2B0S9G-315

SCALE 3:2	DATE 3/8/2016	DR MW	DWG 52-PV3G2B0S9G315	REV C
-----------	---------------	-------	----------------------	-------